

CARE PACK

STORYHOUSE



CHAOS

by Laura Lomas



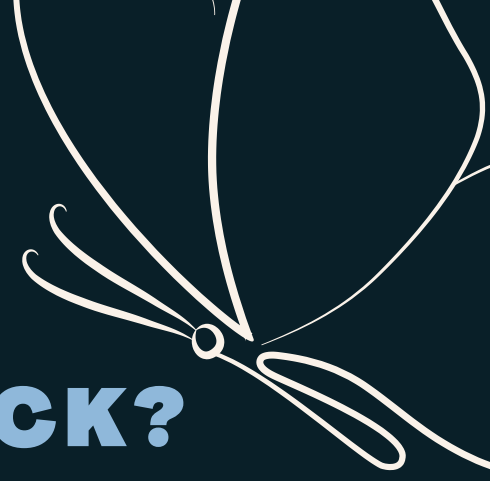
Orchestra

by Charlie Josephine

Storyhouse Youth Theatre (14-17s)
present a double bill performance

Sat 8 February at 6pm & Sun 9 February at 2.30pm

CARE PACK



WHAT IS A CARE PACK?

A CARE PACK IS DESIGNED TO GIVE YOU INFORMATION TO KNOW IF YOU WILL BE AFFECTED BY ANY OF THE THEMES COVERED THROUGHOUT THE SHOW, AND SUGGESTIONS AS TO WHERE TO GET HELP AND RESOURCES.

WE WILL HIGHLIGHT POTENTIALLY DIFFICULT SUBJECT MATTERS, AND POINT YOU TOWARDS PLACES OF RESOURCE THAT WILL BE ABLE TO HELP. WE WILL ALSO HIGHLIGHT OUR ACCESSIBLE PERFORMANCES.

ACCESS INFORMATION

THE PLAYS ORCHESTRA AND CHAOS WILL BE PERFORMED AS A **DOUBLE BILL**.

RUNNING TIME: ORCHESTRA WILL BE PERFORMED FIRST (60 MINUTES), THERE WILL THEN BE A 20 MINUTE INTERVAL, FOLLOWED BY CHAOS (60 MINUTES).

CAPTIONS: CAPTIONS WILL BE AVAILABLE FOR BOTH PERFORMANCES, AND THESE WILL BE DISPLAYED ON A TV SCREEN LOCATED AT THE FRONT OF THE STAGE. RUNNING TIMES OF EACH PLAY

ACCESS: THE PERFORMANCES WILL TAKE PLACE IN THE GARRET THEATRE ON THE 4TH FLOOR. THERE IS LIFT AND STAIR ACCESS. THERE ARE ACCESSIBLE AND GENDER NEUTRAL TOILETS AVAILABLE NEXT TO THE GARRET THEATRE.

Orchestra

by Charlie Josephine

ABOUT 'ORCHESTRA'

Orchestra was part of the National Theatre Connections 2024 program, which commissions new plays for young people to perform.

Orchestra is about the members of an elite-level youth orchestra. They come together in the school holidays to practice for their annual concert. Orchestra asks us to question how we be the best, while also nurturing the joy of creativity, and is being an accomplished musician worth all the pressure.

Age Rating

This play is recommended for ages 13+

Production warnings: Loud music, flashing lights

Content Warnings for: Attempted suicide, overdose, bullying, mental health and divorce.

Swearing: There is minimal swearing in the text.

Content Warnings

Attempted Suicide: In one scene there is a description of a character being sick, it is later described as an overdose.

Bullying: The characters in the play call each other names and 'make fun' of one another. One character is teased for their financial situation.

Mental Health: The play explores how the pressure of being successful affects the mental health of the young people in the orchestra.

Divorce: There is reference to one character's parents being separated.



CHAOS

by Laura Lomas

ABOUT 'CHAOS'

Step into the whirlwind of adolescence with Chaos where the flap of a butterfly's wings could lead to unpredictable outcomes. Follow the intertwining stories of a group of teenagers as they navigate the tumultuous landscape of identity, loss, and the unpredictability of life in an ever expanding universe. Chaos is a powerful exploration of the chaos within us all and a journey into the heart of what it means to grow up.

Age rating

The play is recommended for ages 13+

Production warnings: Loud music, flashing lights

Content warnings for: Domestic violence, death, anxiety & coercive relationships

Swearing: There are some brief uses of bad language

Content Warnings

Domestic violence: The play alludes that one of the characters mother experiences abuse at the hands of her partner.

Death: A character narrates how she witnesses a person hit by a train. Another character grapples with their father having a severe heart attack.

Violence: A characters tell a story of witnessing an assault on a bus

Bullying: There are a number of instances of bullying. One of which involves cyberbullying and the mass sharing of an unspecified image.

Anxiety: A number of the characters deal with anxieties about a range of topics, including bullying, domestic violence, climate change and feelings around a lack of control in their life.

Coercive relationships: Alongside the domestic violence another character is in a secret relationship which exhibits some signs of coercive behaviour.

Sign posting & Resources

If you have been impacted by the content or themes in these plays, please seek the below resources or organisations who can support you.

- **Young Minds** offers practical support and advice for young people being bullied. Mental Health Support For Young People | YoungMinds
- **Cam Crisis Messenger** text service provides free, 24/7 crisis support across the UK. If you are experiencing a mental health crisis and need support, you can text CAM to 85258. Support Messenger can help with urgent issues such as: Suicidal Thoughts, Abuse or Assault, Self-Harm, Bullying, Relationship issues
[Announcing CAM Crisis Messenger - Cameron Grant Memorial Trust \(camgrant.org.uk\)](#)
- **Samaritans** runs the largest UK based helpline for people experiencing a mental health crisis. Samaritans can be called free any time, from any phone, on 116 123 for free. [Samaritans | Every life lost to suicide is a tragedy | Here to listen](#)
- **Bereavement Help Point** at Storyhouse is a volunteer led support group for anyone who is bereaved or supporting someone who is bereaved. storyhouse.com/whats-on/bereavement-help-point/
- **Mind** offers signposting for a variety of Bereavement Support Organisations who can best support you if you are grieving a friend, parent, sibling or other loved one. [Support and self-care for grief - Mind](#)

- **Open the Door** is a service in Cheshire supporting people experiencing unhealthy relationships, domestic violence and abuse. They work with local authorities to offer support. You can also open the door to national support by calling 0808 2000 247 which is the freephone, 24 hour National Domestic Violence Helpline run in partnership between Women's Aid and Refuge.
- **Cheshire CARES** is an enhanced service offering emotional and practical support to help victims cope and recover from the impact of crime. The service provides support for all victims of crime, seven days a week. Cheshire CARES works with victims to assess what support is needed on an individual basis. For victims, whose lives are affected by the most serious of crimes, Cheshire CARES offers an enhanced service meeting with individual victims of crime to agree a support plan to help them during this difficult time. Victims who do not report the crime to the police can access support services directly. Phone 01606 366336 Email cheshire.cares@cheshire.pnn.police.uk Cheshire CARES opening hours: Monday to Friday 8am to 8pm and Sat & Sun 9am to 4pm – and closed on Bank Holidays

If you would like to discuss this care pack in further detail please get in touch with a member of staff on youththeatre@storyhouse.com or come chat to us in person.